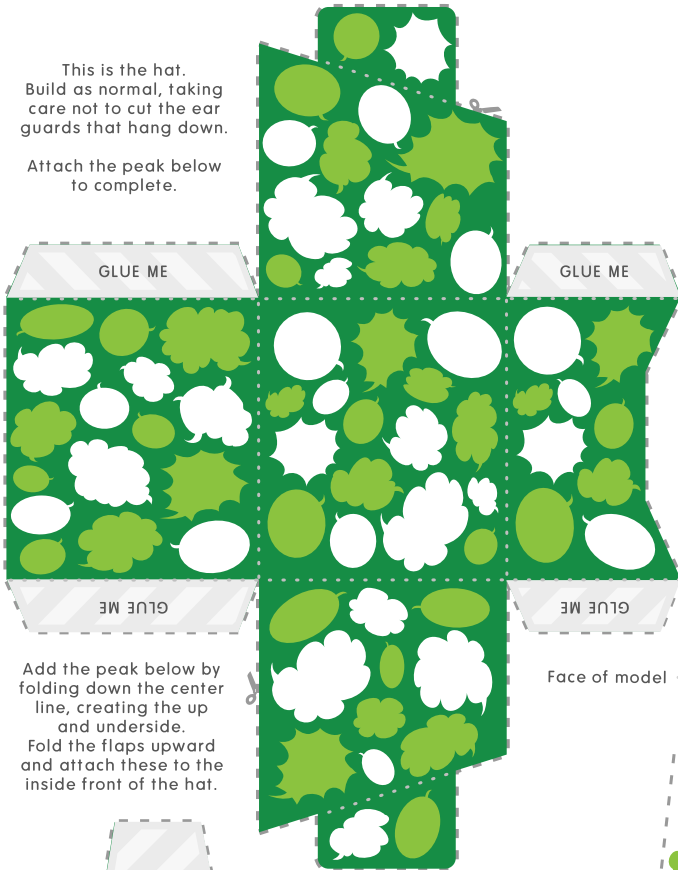


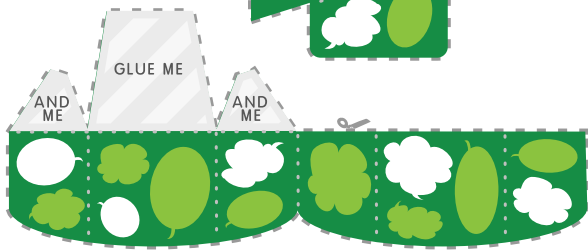
This is the hat.
Build as normal, taking
care not to cut the ear
guards that hang down.

Attach the peak below
to complete.



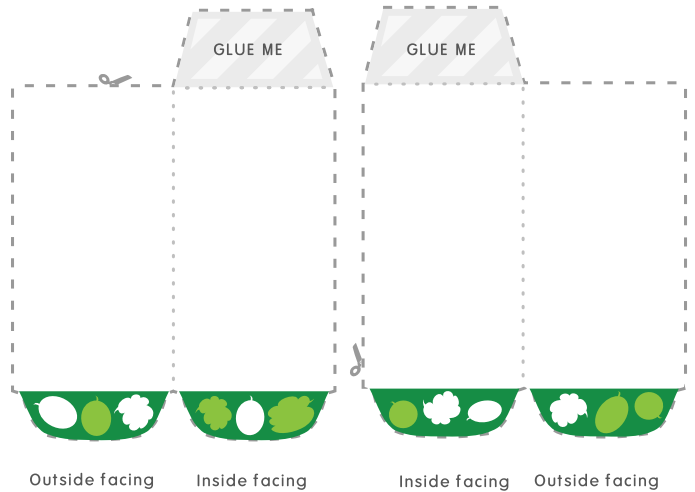
Add the peak below by
folding down the center
line, creating the up
and underside.

Fold the flaps upward
and attach these to the
inside front of the hat.

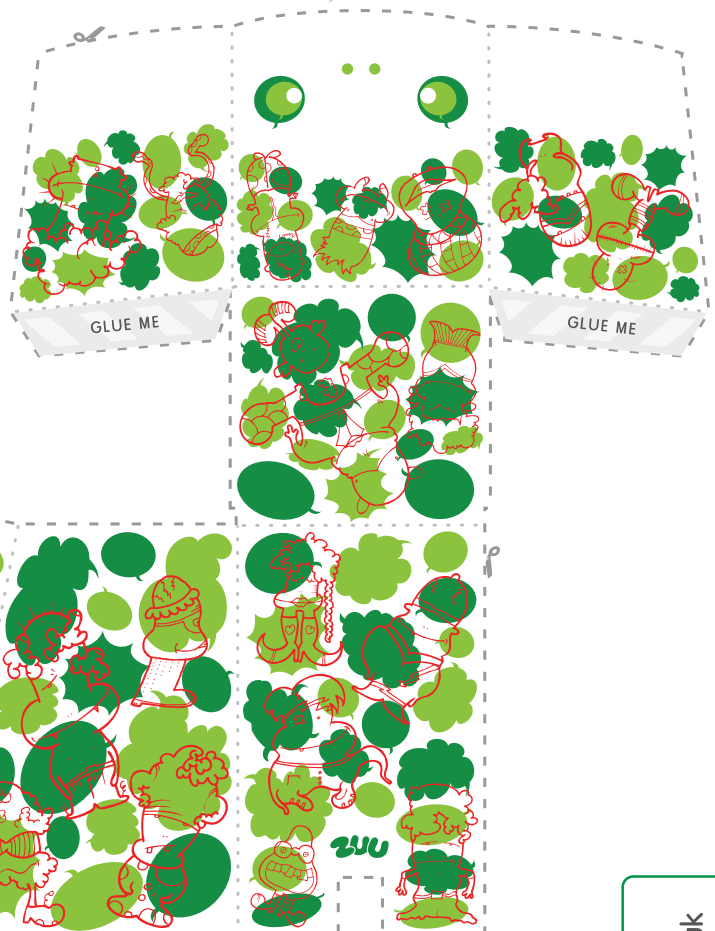


Add the arms by folding down the center line add
some glue and press together (creating a double-
sided piece) and attaching to the inside.

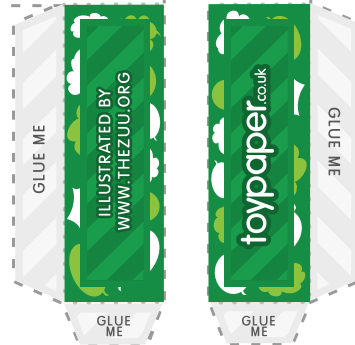
Add glue to the tabs then hook on to either side of the
model, firmly fixing to the inside.



Face of model



Front of model



toypaperTM.co.uk
Illustrated by www.thezuu.org

IMPORTANT

FOLD
CUT - - - - -

Read any special instructions before cutting. Please take
care when using sharp items. Score dotted lines and cut
dashed lines. loosely assemble before applying glue.

PROTOTANK :: ZUU CUSTOM
DIFFICULTY: MEDIUM :: TIME: 25m